

**CITY OF RITZVILLE  
CITY COUNCIL AGENDA  
March 1, 2022**

1. CALL COUNCIL TO ORDER 7:00pm
2. PLEDGE OF ALLEGIANCE
3. ACCEPTANCE OF THE CONSENT AGENDA
4. PUBLIC REQUESTS AND COMMENTS
5. ACTION AGENDA
  - A. No items.
6. DISCUSSION AGENDA
  - A. Sewer Collection System Planning Project and Public Hearing Update
7. CORRESPONDENCE
  - A. No items.
8. MAYOR UPDATES
  - A. Golf Course Restaurant
9. DEPARTMENT UPDATES
  - A. City Attorney
  - B. Public Works
  - C. Police
  - D. Clerk/Treasurer
  - E. Fire
10. ADJOURNMENT

**CONSENT AGENDA**

- Acceptance of the Agenda
- Approval of the Minutes:  
February 1, 2022
- Approval of Payables:  
\$36,726.65
- Approval of Payroll:  
\$88,457.27

**Call Information**

1-253-215-8782 United States Toll

**Meeting ID:** 273 377 5980

**Passcode:** 1930

**View Meeting Online:**

<https://us02web.zoom.us/j/2733775980?pwd=SU14WTVqdGJpYnVMeEYzV1pJOEFOQT09>

**OPENING OF COUNCIL MEETING**

Mayor Linda Kadlec opened the remote council meeting at 7:00pm. Council members present were Mike Schrag, Scott Yaeger, Dennis Chamberlain, Michelle Plumb, Dede Boyer, Marsha Smith, and Debbie Chapman. Staff members in attendance were Public Works Director Dave Breazeale, Clerk-Treasurer Julie Flyckt, Deputy Clerk Treasurer II Michelle Asmussen, City Police Chief David McCormick, and City Attorney John Kragt. City Fire Chief Joel Bell was excused.

**ACCEPTANCE OF THE CONSENT AGENDA**

Mayor Linda Kadlec asked if there were any changes to the consent agenda. Council Member Mike Schrag made a motion to approve the consent agenda as presented. Council Member Dede Boyer seconded the motion. The motion passed 7-0.

**PUBLIC REQUESTS AND COMMENTS-** Mayor Kadlec asked if there were any questions or comments from the public. Hearing none, Mayor Kadlec moved onto the next agenda item.

**ACTION AGENDA**

- A. Standpipe Substantial Completion Certificates and Retainage Release-** Clerk-Treasurer Julie Flyckt stated on June 15<sup>th</sup> of last year, city council passed a resolution to approve the 2020-2021 Standpipe Reservoir reporting project as complete. Council passed the Resolution, but we never came back around to pass the certificates of completion for the interior and exterior. At that time, it was not approved to release the retainage to the contractor. Council Member Scott Yaeger made a motion to approve the mayor to sign the interior and exterior recoating project certificates of completion and issue the retainage payment in the amount of \$22,504.62 to Industrial Coatings Unlimited, LLC. Council Member Dede Boyer seconded the motion. Motion passed 7-0.
- B. Mosquito Control Board-2-year Term Approval-** Mayor Kadlec stated there is a request from David Beus requesting council to approve Gordon Killian for another 2-year term on the Mosquito Control Board. Council Member Scott Yaeger made a motion to approve Gordon Killian to fill another 2-year term on the Mosquito Control Board. Council Member Dede Boyer seconded the motion. Motion passed 7-0.
- C. Sewer Collection System Planning Project funded by CDBG-Set Public Hearing for March 1, 2022-** Clerk-Treasurer Julie Flyckt stated we are getting ready to close out that project and part of the process is to have a public hearing. Council Member Michelle Plumb stated the last she heard it had not been finalized and had been kicked back to Varela to put together a meeting with public works. Public Works Director Dave Breazeale stated he spoke to Varela, and they have a plan going and he thinks this is just to close out the design phase. Julie stated, if we hold off on setting the hearing on March 1<sup>st</sup>, it will take us into April for the number of days we have to publish. If we set it for March 15<sup>th</sup> that would give us time to follow up with Varela and still have time to do the required number of published days. Until we do the public hearing, we can't do the reimbursement so when we get the public hearing done, we can submit our reimbursement for all the costs of the project. Council Member Scott Yaeger stated he found that December 20<sup>th</sup> was the last time we received something from Ben Varela which was the report. At that time there were a couple different sections that he had some questions on. We haven't seen anything back on that so Scott wouldn't vote for having a hearing right now, until we get the final report. Council Member Dennis Chamberlain made a motion to set the Sewer Collection Planning Project, funded by CDBG, Public Hearing for March 15<sup>th</sup>. Council Member Marsha Smith seconded the

CITY OF RITZVILLE REMOTE/IN PERSON COUNCIL MEETING FEBRUARY 15TH, 2022

Several months ago, we passed our asset policy so now we are doing a test run to write the procedures to that policy. Once the policy and procedures are updated, it will come back to council for approval. The council's Park & Rec committee met to review the Golf Course Contract. The city has advertised for individuals to submit a proposal to run the restaurant and the deadline for applications is Friday the 18th. The committee reviewed the contract and defining the lease area needs to be updated. The suggested edits were emailed to Dan Duff, but Julie has not received anything back yet. Once we get the edits back, we will send it over to our attorney to do a final review to update the contract. The mayor and Julie met with Inovia Foundation last Friday and went through all the projects that we proposed. They approved all of them and are releasing the funds except for two projects that we need to get more information to them. The two projects are the Wayfinding Entrance Sign, and the Mural Project on 1st Ave.

**ADJOURNMENT**-With no further comments or business to come before the council, Mayor Linda Kadlec adjourned the remote and in person meeting at 7:30pm.



Michelle Asmussen, Deputy Clerk-Treasurer II

## Julie Flyckt

---

**From:** Ben Varela <[bvarela@varela-engr.com](mailto:bvarela@varela-engr.com)>  
**Sent:** Friday, February 25, 2022 1:28 PM  
**To:** Scott Yaeger; Dave Breazeale; Michelle Plumb; Mike Schrag; Julie Flyckt  
**Cc:** Daniel Cowger; Nathan Hutchens  
**Subject:** RE: Snaky Sewer  
**Attachments:** 127-36 Priority Sewer Predesign Report (stamped).pdf

[External Email]

Good Afternoon Public Works Committee, Dave and Julie,

Attached is the final report for the High Priority Sewer Collection System Improvements funded by the CDBG Planning Only Grant. As you know CDBG requires a number of steps are taken as part of the closeout process for the grant. One of those steps is a public hearing which you have schedule for March 15. The purpose of the public hearing is to notify the public of the results and performance of the project. In this case, the grant resulted in the attached final report on the snaky sewers.

Please review the attached report and let us know if you have any questions on the report or the public hearing or closeout process.

Thank you and have a good weekend,  
Ben

---

**From:** Scott Yaeger [<mailto:scotty@co.adams.wa.us>]  
**Sent:** Wednesday, February 16, 2022 10:08 AM  
**To:** Ben Varela <[bvarela@varela-engr.com](mailto:bvarela@varela-engr.com)>; Dave Breazeale <[Dave.Breazeale@ritzville-wa.us](mailto:Dave.Breazeale@ritzville-wa.us)>; Michelle Plumb <[michelle.plumb@ritzville-wa.us](mailto:michelle.plumb@ritzville-wa.us)>; Mike Schrag <[mlschrag@centurytel.net](mailto:mlschrag@centurytel.net)>; Julie Flyckt <[Julie.Flyckt@ritzville-wa.us](mailto:Julie.Flyckt@ritzville-wa.us)>  
**Cc:** Daniel Cowger <[danielc@varela-engr.com](mailto:danielc@varela-engr.com)>; Nathan Hutchens <[nhutchens@varela-engr.com](mailto:nhutchens@varela-engr.com)>  
**Subject:** RE: Snaky Sewer

Ben  
Please send electronic to this group and then 2 hard copy to City Hall (one for Julie and one for Dave).

Scott Yaeger

---

**From:** Ben Varela <[bvarela@varela-engr.com](mailto:bvarela@varela-engr.com)>  
**Sent:** Wednesday, February 16, 2022 9:26 AM  
**To:** Scott Yaeger <[scotty@co.adams.wa.us](mailto:scotty@co.adams.wa.us)>; Dave Breazeale <[Dave.Breazeale@ritzville-wa.us](mailto:Dave.Breazeale@ritzville-wa.us)>; Michelle Plumb <[michelle.plumb@ritzville-wa.us](mailto:michelle.plumb@ritzville-wa.us)>; Mike Schrag <[mlschrag@centurytel.net](mailto:mlschrag@centurytel.net)>; Julie Flyckt <[Julie.Flyckt@ritzville-wa.us](mailto:Julie.Flyckt@ritzville-wa.us)>  
**Cc:** Daniel Cowger <[danielc@varela-engr.com](mailto:danielc@varela-engr.com)>; Nathan Hutchens <[nhutchens@varela-engr.com](mailto:nhutchens@varela-engr.com)>  
**Subject:** RE: Snaky Sewer

Sorry about that Scott. We'll send the report over. Should we send hard copies or is the electronic version sufficient?

---

**From:** Scott Yaeger [<mailto:scotty@co.adams.wa.us>]  
**Sent:** Tuesday, February 15, 2022 7:20 PM  
**To:** Ben Varela <[bvarela@varela-engr.com](mailto:bvarela@varela-engr.com)>; Dave Breazeale <[Dave.Breazeale@ritzville-wa.us](mailto:Dave.Breazeale@ritzville-wa.us)>; Michelle Plumb <[michelle.plumb@ritzville-wa.us](mailto:michelle.plumb@ritzville-wa.us)>; Mike Schrag <[mlschrag@centurytel.net](mailto:mlschrag@centurytel.net)>; Julie Flyckt <[Julie.Flyckt@ritzville-wa.us](mailto:Julie.Flyckt@ritzville-wa.us)>



City of Ritzville

**PRELIMINARY DESIGN REPORT:**

**HIGH PRIORITY SEWER COLLECTION SYSTEM IMPROVEMENTS**

---

December 2021



**VARELA**  
Engineering & Management

# 1.0 Introduction

## 1.1 Background

In 2003 Ritzville completed a Comprehensive Sewer Plan (CSP) to address the City's sewer collection system needs. The document was approved by Ecology and is on file with Ecology's Eastern Region Office. The document includes a proposed improvement plan of high priority collection system improvements. The City has completed, or is in the process of completing, several of the elements identified in the CSP's 10-yr Improvements Program (e.g. Pete's lift station and related collection improvements, and others).

Over time, and since the completion of the 2003 CSP (18 years), additional high priority sewer collection system needs have been identified by City staff. The most significant and pressing of which is the need to address areas of small diameter substandard "snaking" sewer lines. These areas include small diameter sewer extensions that evolved over time as the City gradually grew and new houses were built. These areas did not have an established collection system in the area and small diameter services (4" in many cases) were haphazardly extended to new residences creating a network of snaking, small diameter sewer lines with unknown materials, locations, sizes, quality, etc. In one case, the service pipe passes through a basement of one house, on its way to serve other upstream houses.

These areas of snaking sewer lines create legal liability issues for the City and increased risk of basements flooding if one person's service becomes plugged. Often, issues associated with the clogging of the snaking lines leads to arguments between neighbors and the inability for the City to service the substandard lines, and many other related problems. The residents served in these areas are paying customers like other City customers, but do not receive the same service benefits of other customers in town due to the substandard and problematic nature of these snaking sewer mains. The City wants to eliminate the snaking sewer mains to improve its level of service and to avoid ongoing operational and liability issues.

## 1.2 Funding and Scope

In 2019 Ritzville received a Community Development Block Grant (CDBG) Planning Only Grant (POG) to evaluate the substandard snaking sewer main areas, provide recommended improvements and costs, and to integrate the improvements into the City's 2003 CSP 10-yr Improvements Program.

The scope of this evaluation includes the following:

- Identify and document the substandard small diameter "snaking" sewer areas
- Provide recommended upgrades, estimated costs, and prioritization
- Update the 2003 CSP 10-yr Improvements Program to include the improvements
- Update the 10-yr Improvement Program to remove completed projects and update costs for projects yet to be completed
- Document findings in a pre-design report

## 1.3 Future General Sewer Plan

This Preliminary Design Report provides recommendations the City can implement to address the substandard "snaking" sewer mains as well as the other improvements identified in the 2003 CSP 10-yr Improvements Program; however, this evaluation does not provide a comprehensive analysis of the

## 2.0 Evaluation of Identified Areas

### 2.1 Identification and Prioritization of Problem Areas

City staff identified six (6) areas in the collection system that are served by substandard "snaky" sewer mains. Meetings were held with City staff between 2019 and 2021 to discuss ongoing issues associated with the snaky sewers which have been occurring since their installation. **Figures 1-4** (located at the end of **Section 2**) show current conditions at each site. Note current conditions are approximate only and based on available records and City input. The figures also show the recommended improvements outlined herein.

City staff prioritized the known sanitary sewer collection system issues based on each location's history of maintenance needs. **Appendix B** includes notes from the City identifying snaky sewers, as well as additional sanitary sewer collection system issues. **Table 1** summarizes the six (6) identified snaky sewer areas. **Table 1** also provides City priority for each area and summary of City observations and comments.

Additional sanitary sewer collection system issues not previously included in the 2003 CSP are summarized in **Section 3** and shown on **Figure 5**.

## 2.2 Methodology

Recommended improvements provided in the following chapters utilize the following methodologies for addressing the snaking and substandard sewers:

- Install new sewer mains (min 8" diameter) to serve the deficient areas; minimum slope = 0.40 feet per 100 feet.
- Install new services (4") to serve individual residences, each of which will connect to the new 8" sewer main. The average required length of service replacement is assumed to be 50 LF.
- Existing sewer lines and services shown on **Figures 1, 2, 3 & 4** are approximate. Proposed sewer lines shown on the figures are schematic. Final locations to be determined during design.
- Temporary construction easements will be needed for work shown on private property.
- Install new manholes at ends of new 8" sewer mains. New manholes located within City right-of-way will provide better ability for the city to maintain the sewer mains.
- Replace discharge manholes with new manholes.
- Replace brick manholes with new manholes.
- Roadway asphalt removal/replacement is assumed to half road width for locations with TIB PCR ratings greater than 50 and when the new main can be located on either side of the road. Full road width asphalt removal/replacement (curb-to-curb) is assumed for locations with TIB PCR rating less than 50 and/or where new main must be located in the center of the road. For cost estimating herein, typical road HMA section is assumed to be 3" asphalt over 8" top coarse.
- Gravel replacement in alleys assumed to be 6" depth for full alley width.
- Curb/gutter replacement assumes replacement of width equal to the top width of the trench.
- Concrete flatwork replacement assumes replacement of width equal to the top width of the trench (assumed to be 20' wide).
- Depth to bedrock is assumed to be 2' for areas west of 4<sup>th</sup> Ave. Rock excavation assumed not needed for areas east of 4<sup>th</sup> Ave.
- Mobilization and administration costs assumed to be 8% of project cost.



- o Replacement of 250 LF of 4" main with new 8" main in the alley between Palouse and Chelan St and 7th and 8th Ave.
- o Installation of one new manhole
- o Installation of six (6) service saddles in City ROW
- o Gravel surfacing

The following table provides planning level cost estimates for the Priority #1 snaky sewer improvements.

Table 2 Estimated Improvements Cost – Priority #1 <sup>(1)</sup>

Description	Estimated Quantity	Units	Unit Price	Amount
Mobilization and Administration <sup>(2)</sup>	1	EA	\$28,000	\$28,000
PVC Sewer Mains (8-in)	800	LF	\$90	\$72,000
Sewer Services <sup>(3)</sup> (Incl. Landscape Restoration)	350	LF	\$95	\$33,000
Manhole <sup>(4)</sup>	5	EA	\$8,000	\$40,000
Service Tee	7	EA	\$1,300	\$9,000
Allowance for Temporary Construction Easements	3	EA	\$2,000	\$6,000
Pipe Bedding Placement	800	LF	\$15	\$12,000
HMA Removal/Placement	1,100	SY	\$65	\$72,000
Gravel Placement	1,000	SY	\$25	\$25,000
Curb and Gutter Removal/Placement	40	LF	\$95	\$4,000
Concrete Flatwork Removal/Placement	40	LF	\$125	\$5,000
Traffic Control	1	EA	\$15,000	\$15,000
Additional Improvements per City <sup>(5)</sup> Incl. Improvements between 7th & 8th Ave.	1	LS	\$53,000	\$53,000
Subtotal				\$374,000
Sales Tax (8.0%)				\$29,900
Contingency (15%)				\$56,000
Eng, Const Mgmt, Inspection (25%)				\$115,000
<b>Estimated Improvements Cost Total</b>				<b>\$575,000</b>

1. Assumes no rock excavation
2. Assumed 8% of total
3. Assume 50 LF of 4-in PVC sewer main for each connection. Cost includes allowance for landscape restoration.
4. Includes replacement of the manhole on Palouse St at alley between 7<sup>th</sup> and 8<sup>th</sup> Ave. Refer to **Table 10**
5. Includes replacement of 250 LF of 4-in main with new 8-in main in alley between Palouse and Chelan St and 7<sup>th</sup> and 8<sup>th</sup> Ave, new manhole, 6 service saddles, pipe bedding, and gravel placement. Refer to **Figure 5**.



The following table provides planning level cost estimates for the Priority #2 snaky sewer improvements.

Table 3 Estimated Improvements Cost – Priority #2 <sup>(1)</sup>

Description	Estimated Quantity	Units	Unit Price	Amount
Mobilization and Administration <sup>(2)</sup>	1	EA	\$17,000	\$17,000
PVC Sewer Mains (8-in)	550	LF	\$90	\$50,000
Sewer Services <sup>(3)</sup> (Incl. Landscape Restoration)	300	LF	\$95	\$29,000
Manhole <sup>(4)</sup>	4	EA	\$8,000	\$32,000
Service Tee	6	EA	\$1,300	\$8,000
Pipe Bedding Placement	550	LF	\$15	\$8,000
HMA Removal/Placement	900	SY	\$65	\$59,000
Gravel Placement	200	SY	\$25	\$5,000
Curb and Gutter Removal/Placement	20	LF	\$95	\$2,000
Traffic Control	1	EA	\$15,000	\$15,000
Subtotal				\$225,000
Sales Tax (8.0%)				\$18,000
Contingency (15%)				\$34,000
Eng, Const Mgmt, Inspection (25%)				\$69,300
<b>Estimated Improvements Cost Total</b>				<b>\$346,000</b>

1. Assumes no rock excavation
2. Assumed 8% of total
3. Assume 50 LF of 4-in PVC sewer main for each connection. Cost includes allowance for landscape restoration.
4. Includes replacement of the manhole on Jackson St at alley between 6<sup>th</sup> and 7<sup>th</sup> Ave.

The following table provides planning level cost estimates for the Priority #3 snaky sewer improvements.

Table 4 Estimated Improvements Cost – Priority #3

Description	Estimated Quantity	Units	Unit Price	Amount
Mobilization and Administration <sup>(1)</sup>	1	EA	\$10,000	\$10,000
PVC Sewer Mains (8-in)	250	LF	\$90	\$23,000
Sewer Services <sup>(2)</sup> (Incl. Landscape Restoration)	150	LF	\$95	\$14,000
Manhole <sup>(3)</sup>	2	EA	\$8,000	\$16,000
Service Tee	3	EA	\$1,300	\$4,000
Allowance for Temporary Construction Easements	3	EA	\$2,000	\$6,000
Pipe Bedding Placement	250	LF	\$15	\$4,000
HMA Removal/Placement	100	SY	\$65	\$7,000
Gravel Placement	600	SY	\$25	\$15,000
Rock Excavation <sup>(4)</sup>	120	CY	\$200	\$24,000
Traffic Control	1	EA	\$15,000	\$15,000
Subtotal				\$138,000
Sales Tax (8.0%)				\$11,000
Contingency (15%)				\$21,000
Eng, Const Mgmt, Inspection (25%)				\$42,500
<b>Estimated Improvements Cost Total</b>				<b>\$213,000</b>

1. Assumed 8% of total
2. Assume 50 LF of 4-in PVC sewer main for each connection. Cost includes allowance for landscape restoration.
3. Includes replacement of the manhole on Columbia St at alley between Alder and Birch Ave.
4. Assumes depth to rock = 2 ft; depth of trench = 5 ft; width of trench = 4 ft



The following table provides planning level cost estimates for the Priority #4 snaky sewer improvements.

Table 5 Estimated Improvements Cost – Priority #4

Description	Estimated Quantity	Units	Unit Price	Amount
Mobilization and Administration <sup>(1)</sup>	1	EA	\$17,000	\$17,000
PVC Sewer Mains (8-in)	300	LF	\$90	\$27,000
Sewer Services <sup>(2)</sup> (incl. Landscape Restoration)	350	LF	\$95	\$33,000
Manhole	2	EA	\$8,000	\$16,000
Service Tee	7	EA	\$1,300	\$9,000
Allowance for Temporary Construction Easements	7	EA	\$2,000	\$14,000
Pipe Bedding Placement	300	LF	\$15	\$5,000
HMA Removal/Placement	100	SY	\$65	\$7,000
Gravel Placement	600	SY	\$25	\$15,000
Rock Excavation <sup>(3)</sup>	330	CY	\$200	\$66,000
Traffic Control	1	EA	\$15,000	\$15,000
Subtotal				\$224,000
Sales Tax (8.0%)				\$17,900
Contingency (15%)				\$34,000
Eng, Const Mgmt, Inspection (25%)				\$69,000
<b>Estimated Improvements Cost Total</b>				<b>\$345,000</b>

1. Assumed 8% of total

2. Assume 50 LF of 4-in PVC sewer main for each connection. Cost includes allowance for landscape restoration.

3. Assumes depth to rock = 2 ft; depth of trench = 9 ft; width of trench = 4 ft

The following table provides planning level cost estimates for the Priority #5 snaky sewer improvements.

Table 6 Estimated Improvements Cost – Priority #5

Description	Estimated Quantity	Units	Unit Price	Amount
Mobilization and Administration <sup>(1)</sup>	1	EA	\$25,000	\$25,000
PVC Sewer Mains (8-in)	400	LF	\$90	\$36,000
PVC Sewer Mains (4-in)	50	LF	\$70	\$3,500
Sewer Services <sup>(2)</sup> (Incl. Landscape Restoration)	500	LF	\$95	\$48,000
Manhole <sup>(3)</sup>	3	EA	\$8,000	\$24,000
Service Tee	10	EA	\$1,300	\$13,000
Cleanout	1	EA	\$1,000	\$1,000
Pipe Bedding Placement	450	LF	\$15	\$7,000
HMA Removal/Placement	1,400	SY	\$65	\$91,000
Rock Excavation <sup>(4)</sup>	390	CY	\$200	\$78,000
Traffic Control	1	EA	\$15,000	\$15,000
			Subtotal	\$341,500
			Sales Tax (8.0%)	\$27,300
			Contingency (15%)	\$51,000
			Eng, Const Mgmt, Inspection (25%)	\$105,000
			<b>Estimated Improvements Cost Total</b>	<b>\$525,000</b>

1. Assumed 8% of total
2. Assume 50 LF of 4-in PVC sewer main for each connection. Cost includes allowance for landscape restoration.
3. Includes replacement of the manhole on Jefferson St at alley between 2<sup>nd</sup> and 3<sup>rd</sup> Ave.
4. Assumes depth to rock = 2 ft; depth of trench = 8 ft; width of trench = 4 ft

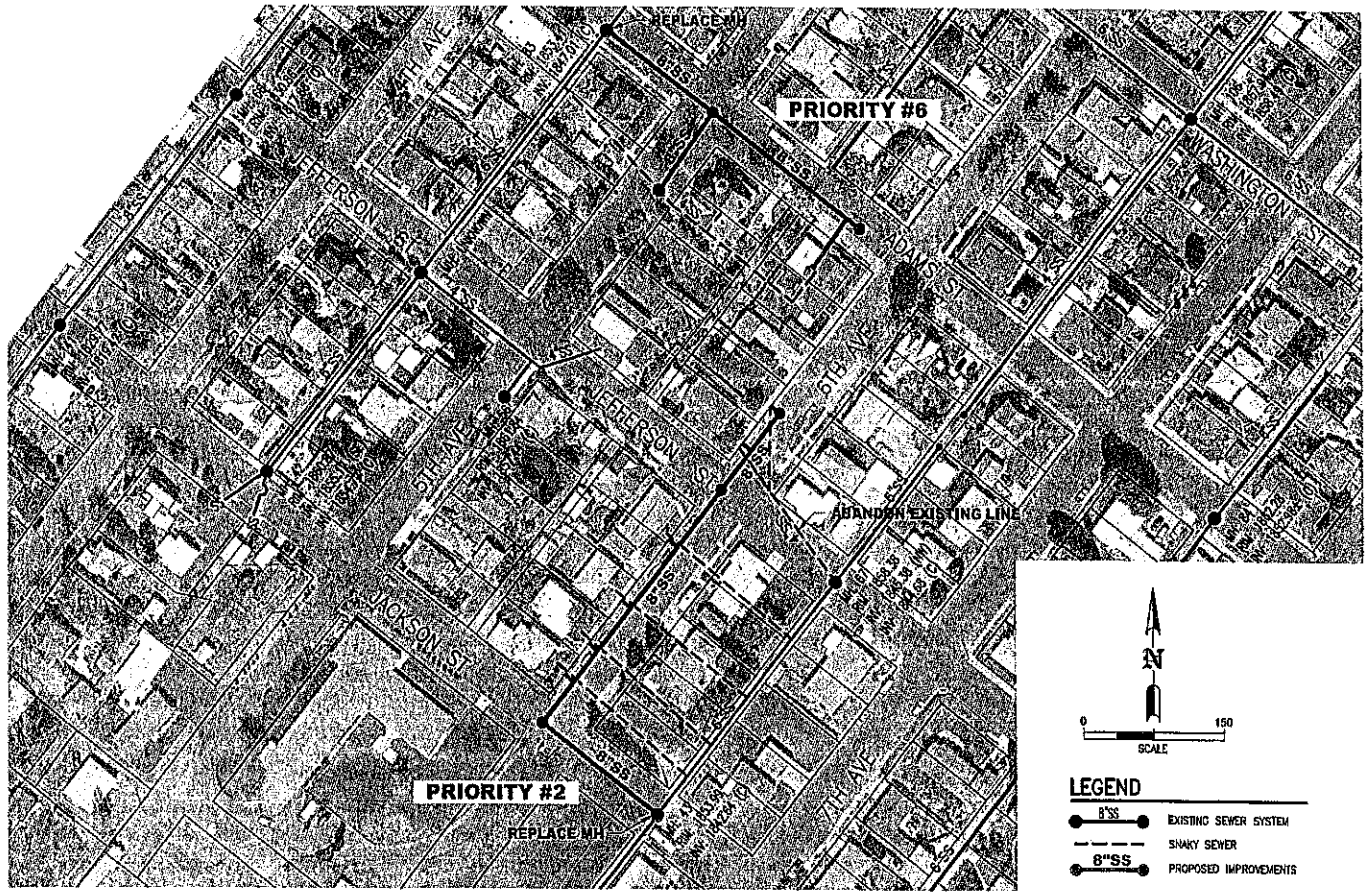
The following table provides planning level cost estimates for the Priority #6 snaky sewer improvements.

Table 7 Estimated Improvements Cost – Priority #6 <sup>(1)</sup>

Description	Estimated Quantity	Units	Unit Price	Amount
Mobilization and Administration <sup>(2)</sup>	1	EA	\$13,000	\$13,000
PVC Sewer Mains (8-in)	450	LF	\$90	\$41,000
Sewer Services <sup>(3)</sup> (Incl. Landscape Restoration)	50	LF	\$95	\$5,000
Manhole <sup>(4)</sup>	3	EA	\$8,000	\$24,000
Service Tee	1	EA	\$1,300	\$1,000
Allowance for Temporary Construction Easements	1	EA	\$2,000	\$2,000
Pipe Bedding Placement	450	LF	\$15	\$7,000
HMA Removal/Placement	900	SY	\$65	\$59,000
Curb and Gutter Removal/Placement	20	LF	\$95	\$2,000
Concrete Flatwork Removal/Placement	20	LF	\$125	\$3,000
Traffic Control	1	EA	\$15,000	\$15,000
			Subtotal	\$172,000
			Sales Tax (8.0%)	\$13,800
			Contingency (15%)	\$26,000
			Eng, Const Mgmt, Inspection (25%)	\$53,000
			<b>Estimated Improvements Cost Total</b>	<b>\$265,000</b>

1. Assumes no rock excavation
2. Assumed 8% of total
3. Assume 50 LF of 4-in PVC sewer main for each connection. Cost includes allowance for landscape restoration.
4. Includes replacement of the manhole on Adams St at alley between 4<sup>th</sup> and 5<sup>th</sup> Ave.

1273501 Fig 1 - Fig 4



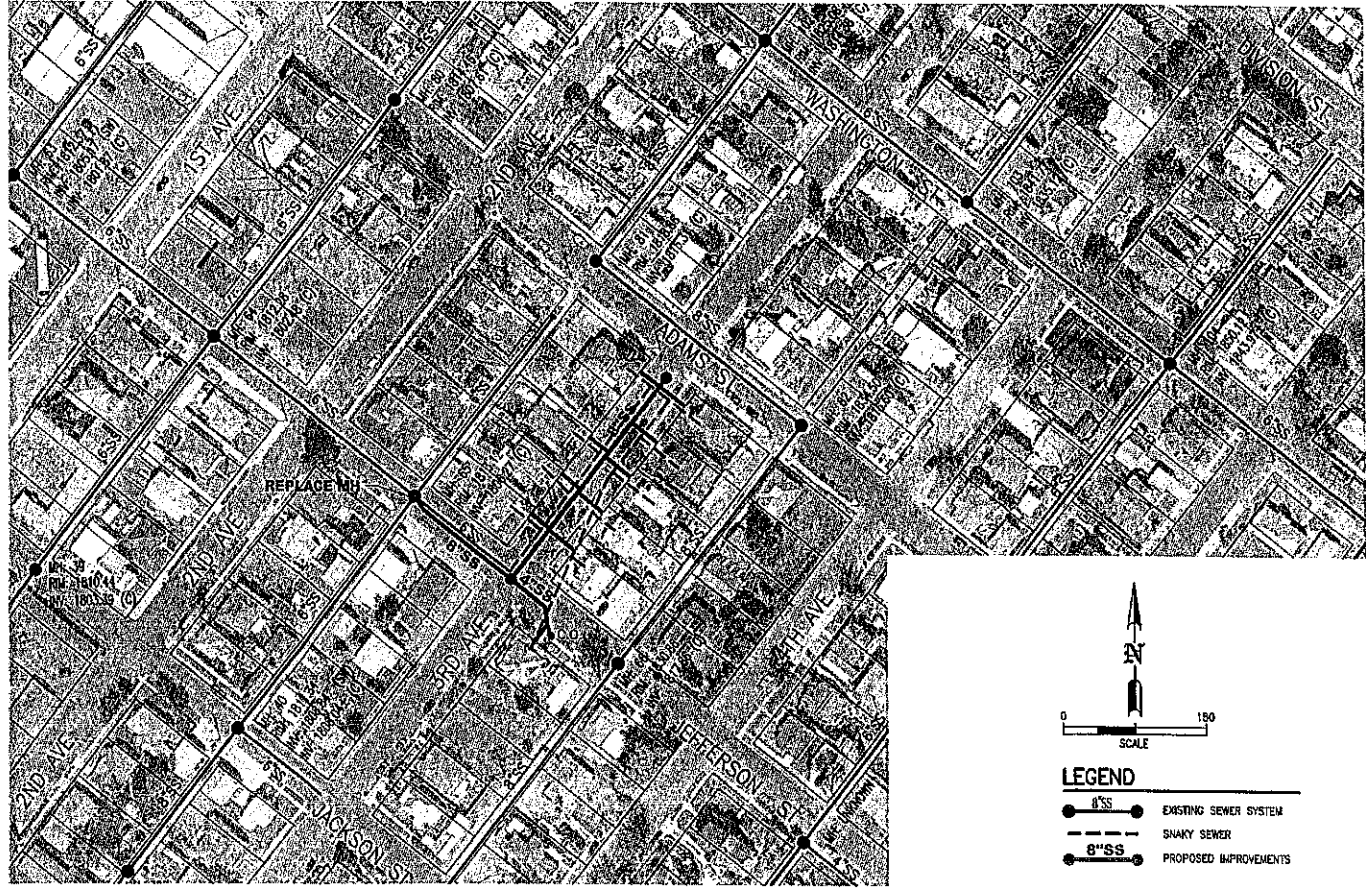
SCALE: AS SHOWN  
 DESIGNED: NVA  
 DRAWN: TWP  
 CHECKED:  
 APPROVED:  
 PROJ. NO.: 127-36-01  
 DATE: 12/15/21



**VARELA**  
 Engineering & Management

**CITY OF RITZVILLE, WASHINGTON**  
 PRELIMINARY DESIGN REPORT: HIGH PRIORITY SEWER  
 COLLECTION IMPROVEMENTS  
 SUBSTANDARD "SNAKY" SEWER LINES - PRIORITIES #2 & #6

FIGURE  
**2**



1273801 Fig 1 - Fig 4

SCALE: AS SHOWN  
 DESIGNED: NVH  
 DRAWN: TVP  
 CHECKED:  
 APPROVED:  
 PROJ. NO.: 127-36-01  
 DATE: 12/15/21



**CITY OF RITZVILLE, WASHINGTON**  
 PRELIMINARY DESIGN REPORT: HIGH PRIORITY SEWER  
 COLLECTION IMPROVEMENTS  
 SUBSTANDARD "SNAKY" SEWER LINES - PRIORITY #5

**FIGURE**  
**4**



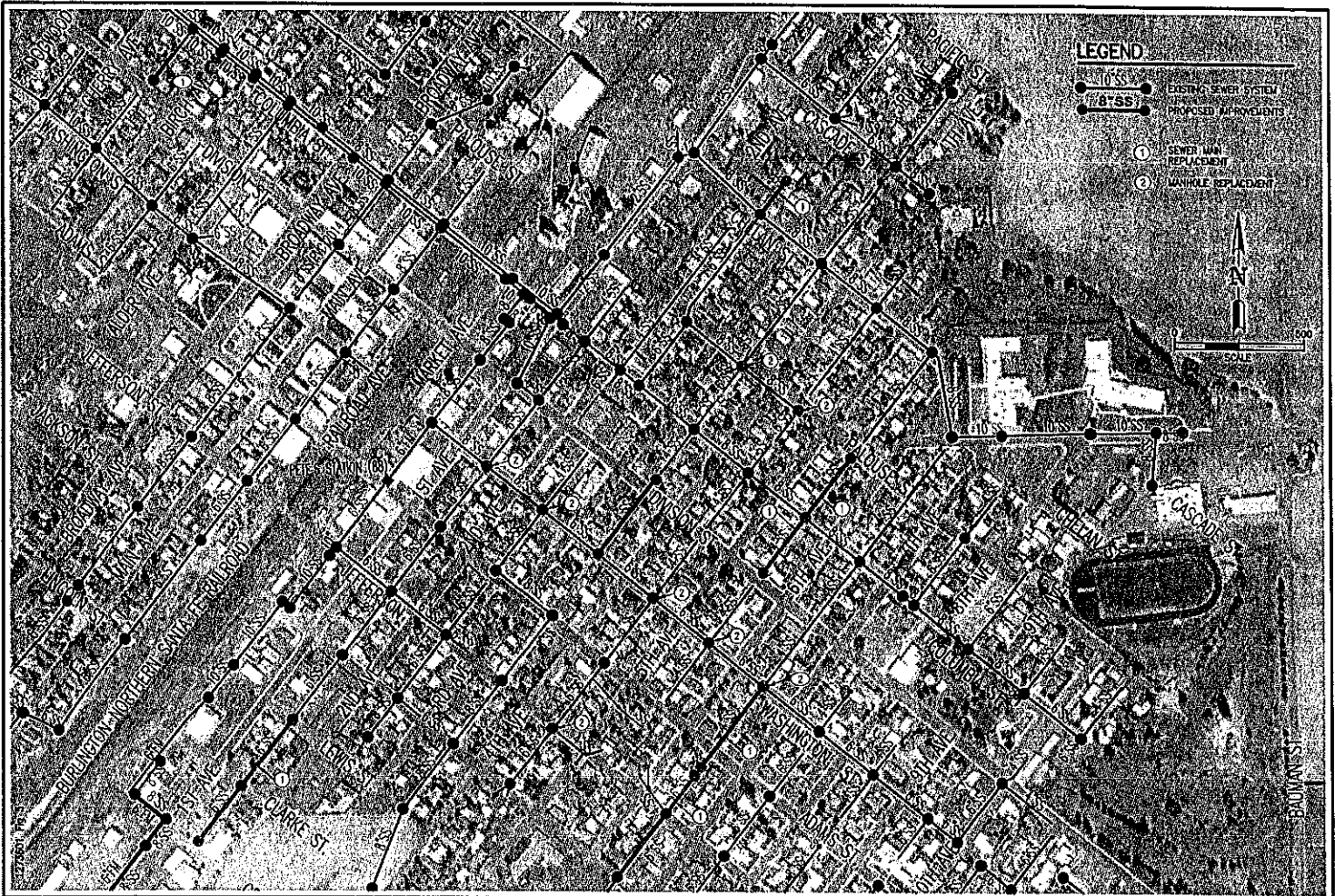
### 3.2 Summary of Additional Collection System Needs

Table 8 Summary of Additional Collection System Needs and Prioritization

City Priority	Description (1)	City Comments/Observations (2)
#AS-1	Sewer Line Replacement – Located between Columbia and Division St and 5 <sup>th</sup> and 6 <sup>th</sup> Ave	<ul style="list-style-type: none"> <li>• Sewer main needs replaced</li> <li>• Not enough drop at the cleanout which is where the end house connections causing constant issues</li> <li>• On bi-weekly wash list</li> </ul>
#AS-2	Sewer Line Replacement – Located between Columbia and Division St and Cherry and Birch Ave	<ul style="list-style-type: none"> <li>• Sewer main needs replaced</li> <li>• Some of this line has been replaced over the last couple years</li> <li>• 75 feet of main still needs replaced</li> <li>• On wash list</li> </ul>
#AS-3	Sewer Line Replacement – Located between Chelan and Cascade St and 2 <sup>nd</sup> and 3 <sup>rd</sup> Ave	<ul style="list-style-type: none"> <li>• Sewer main needs replaced</li> <li>• Main is in constant need of flushing</li> <li>• On wash list</li> </ul>
#AS-4	Sewer Line Replacement – Located between Olive and Palouse St and Birch and Alder Ave	<ul style="list-style-type: none"> <li>• Sewer main needs replaced</li> <li>• Flat line</li> <li>• City replaced approx. 200 feet between Chelan and Palouse a couple years ago</li> <li>• Very rocky ground</li> <li>• On wash list</li> </ul>
#AS-5	Sewer Line Replacement – Located between Palouse and Columbia St and 6 <sup>th</sup> and 7 <sup>th</sup> Ave	<ul style="list-style-type: none"> <li>• Sewer main needs replaced</li> <li>• On wash list</li> </ul>
#AS-6	Sewer Line Replacement – Located between Jackson and Washington St and 6 <sup>th</sup> and 7 <sup>th</sup> Ave	<ul style="list-style-type: none"> <li>• Sewer main needs replaced</li> <li>• On wash list</li> <li>• No manhole in middle of 2 block stretch</li> </ul>



City Priority	Description (1)	City Comments/Observations (2)
#AM-6	Manhole Replacement – Located on Washington St between 4 <sup>th</sup> and 5 <sup>th</sup> Ave	<ul style="list-style-type: none"> <li>• Manhole needs replaced</li> <li>• Manhole is brick and mortar</li> </ul>
#AM-7	Manhole Replacement – Located on Washington St between 2 <sup>nd</sup> and 3 <sup>rd</sup> Ave	<ul style="list-style-type: none"> <li>• Manhole needs replaced</li> <li>• Manhole is brick</li> <li>• Bottom of manhole is falling apart</li> </ul>
#AM-8	Manhole Replacement – Located on Palouse St between 4 <sup>th</sup> and 5 <sup>th</sup> Ave	<ul style="list-style-type: none"> <li>• Manhole needs replaced</li> <li>• Manhole is start of Palouse line</li> <li>• Bottom of manhole is lower than exit pipe level resulting in standing water</li> </ul>
#AM-9	Manhole Replacement – Located on Palouse St between 3 <sup>rd</sup> and 4 <sup>th</sup> Ave	<ul style="list-style-type: none"> <li>• Manhole needs replaced</li> <li>• Manhole is falling apart</li> <li>• Bottom of manhole is rough</li> </ul>
#AM-10	Manhole Replacement – Located on Palouse St between Main and Broadway Ave	<ul style="list-style-type: none"> <li>• Manhole needs replaced</li> <li>• Manhole is brick and falling apart</li> <li>• Manhole identified as needing replacement in 2003 CSP</li> </ul>
#AM-11	Manhole Replacement – Located on Jefferson St between Railroad and Main Ave	<ul style="list-style-type: none"> <li>• Manhole needs replaced</li> <li>• Pipe runs through manhole</li> <li>• Ineffective</li> </ul>
#AM-12	Manhole Replacement – Located on Clarke St between 1 <sup>st</sup> and 2 <sup>nd</sup> Ave	<ul style="list-style-type: none"> <li>• Manhole needs replaced</li> <li>• Manhole is brick</li> <li>• Bottom of manhole is broken</li> <li>• Manhole identified as needing replacement in 2003 CSP</li> </ul>



SCALE: AS SHOWN  
 DESIGNED: MVH  
 DRAWN: TVP  
 CHECKED:  
 APPROVED:  
 PROJ. NO.: 127-36-01  
 DATE: 10/18/21



**VARELA**  
 Engineering & Management

**CITY OF RITZVILLE, WASHINGTON**  
 PRELIMINARY DESIGN REPORT: HIGH PRIORITY SEWER  
 COLLECTION IMPROVEMENTS  
 ADDITIONAL SEWER IMPROVEMENTS PER CITY (2021)

FIGURE

**5**

Table 9 Updated 10-year Improvements Program

<b>Priority #1 – Recommended Improvements for Addressing Substandard "Snaky" Sewers</b>					
<b>Priority</b>	<b>Year</b>	<b>Improvement <sup>(1)</sup></b>	<b>Purpose</b>	<b>Est. Cost <sup>(2)</sup></b>	
SS-1	2023/2024	Priority #1: Palouse & 8th Ave. – Located between Chelan and Palouse St and 8th and 9th Ave	Address substandard and snaky sewer mains	\$575,000	
SS-2	2023/2024	Priority #2: Jackson & 6th Ave. – Located between Jackson and Adams St on 6th Ave	Address substandard and snaky sewer mains	\$346,000	
SS-3	2023/2024	Priority #3: Columbia & Alley – Located between Divislon and Columbia St and Birch and Alder Ave	Address substandard and snaky sewer mains	\$213,000	
SS-4	2023/2024	Priority #4: Palouse & Alley – Located between Columbia and Palouse St and Alder and Broadway Ave	Address substandard and snaky sewer mains	\$345,000	
SS-5	2023/2024	Priority #5: Jefferson & 3rd Ave. – Located between Jefferson and Adams St on 3rd Ave	Address substandard and snaky sewer mains	\$525,000	
SS-6	2023/2024	Priority #6: Adams & 5th Ave. – Located between 4th and 6th St on Adams St	Address substandard and snaky sewer mains	\$265,000	
<b>Total Estimated Cost for Addressing Substandard "Snaky" Sewers</b>				<b>\$2,269,000</b>	
<b>Updated 2003 CSP Improvements Program</b>					
<b>Priority</b>	<b>Year</b>	<b>Improvement <sup>(1)(3)</sup></b>	<b>Purpose</b>	<b>2003 CSP Est. Cost</b>	<b>2021 Est. Cost <sup>(4)</sup></b>
CSP-1	2023	Clean and TV collection system	Identify and prioritize existing mains to be replaced	\$75,000	\$148,000 <sup>(5)</sup>
CSP-2	2023	Prepare General Sewer Plan	Provide present and long-term planning for the City's next 20-year planning period	<sup>(6)</sup>	\$172,000 <sup>(7)</sup>
CSP-3	2024	Replace perforated manhole lids	Reduce Inflow	\$7,000	\$21,000

Priority	Year	Improvement <sup>(1)(3)</sup>	Purpose	2003 CSP Est. Cost	2021 Est. Cost <sup>(4)</sup>
CSP-16	2032	Replace Chelan manhole in alley between Alder & Main	Improve system safety and operating characteristics	\$18,000	\$31,000
<b>Total Estimated Cost for Updated 2003 CSP Improvements Program</b>				<b>\$469,000</b>	<b>\$1,024,000</b>
<b>Additional Collection System Needs</b>					
<b>Improvement <sup>(1)(9)</sup></b>				<b>Est. Cost</b>	
Total Estimated Cost for Additional Sewer Main Replacements				\$1.5M - \$2.0M	
Total Estimated Cost for Additional Manhole Replacements				\$300,000	
<b>Total Estimated Cost for Additional Collection System Needs</b>				<b>\$2.0M - \$2.5M</b>	

1. Refer to **Figure 6** for locations of improvements
2. Refer to **Section 2** for detailed cost estimates for addressing substandard "snaky" sewers
3. Assumes that 2003 CSP 20-yr improvements remain within the 20-yr planning period
4. Refer to **Appendix A** for detailed cost estimates for 2021 estimated costs
5. Includes cleaning and video inspection of 30,000 LF of sewer main (about 40% of the collection system), per 2021 ECY Application for General Sewer Plan
6. Preparation of General Sewer Plan not identified in 2003 CSP
7. Per 2021 ECY Application for General Sewer Plan
8. Project included in Project No. 1 – Eliminate snaky sewers between Chelan & Palouse St and 8<sup>th</sup> & 9<sup>th</sup> Ave. Refer to **Figure 1**
9. Refer to **Section 3** for a summary of additional collection system needs

- Bid/Construct Phase 1 sewer improvements

Additional phase(s) (Phase 2, etc.) will be needed to address remaining improvements in the CIP, and the additional sewer system needs identified by the City (see **Section 4**).

Some additional comments/considerations:

- The City applied for funding from the Department of Ecology (ECY) in 2021 to complete an updated General Sewer Plan (GSP) and includes videoing roughly 40% of the collection system. Additional main replacements will be identified and prioritized at that time. There are also known capacity issues that are not addressed in the 2003 GSP that will be addressed in the future updated GSP. That prioritization will supersede the CIP included in this report.
- Completion of the future GSP will likely take 2 to 3 years. Given that time frame, and the high priority nature of the improvements herein, proceeding with "Phase 1" improvements seems prudent with the understanding that future evaluations will likely reveal other high priority mains that also need to be replaced.
- To obtain ECY funding for the improvements herein it will require updating the GSP, or amending the current GSP with the improvements herein. It may be possible to use this report as an amendment to the City's existing 2003 GSP; however, ECY may require additional items for it to be approved as a GSP amendment. Depending on what is requested by ECY, it may make sense to utilize other funding for the Phase 1 improvements and wait to utilize ECY funding until after the future GSP update is completed.
- The additional sewer system improvements identified included in **Section 3** are grouped into a single planning level cost estimate. The City may want to complete some of those improvements with the Phase 1 improvements (or subsequent phases). If that is the case, some pre-design estimates should be prepared, or appropriate contingency applied, to planning level estimates.
- Current and future TIB work, and/or other road improvement projects and utility work, should include consideration to the improvements herein.
- The cost per service is high for the priority sewer improvements and is not untypical for work like this. The more improvements are done at a single time will likely reduce unit costs and increase cost efficiencies.

For Ritzville to utilize ECY funding for sewer improvements, the improvements will need to be included in an approved GSP or amendment to an existing GSP. See **Section 5** for considerations regarding Ritzville's future GSP update and/or submitting this report to ECY as an amendment to the City's existing 2003 GSP.

### *US Department of Agriculture – Rural Development (RD)*

The USDA Rural Development (RD) – Water and Waste Disposal Loan and Grant Program funds projects for small (less than 10,000 people) financially distressed communities to extend and improve water and sewer facilities. The program is primarily a loan program; however, grants are also offered on projects where sewer rates become excessive as compared to sewer rates being paid in other similar communities in the region.

Applicants must demonstrate effort and subsequent inability to finance the project through their own resources or commercial credit, and demonstrate the financial feasibility of the project, including ability to repay the loan. Loan security is normally a revenue bond ordinance, with loan repayment from utility rates, although repayment from taxes can also be used for RD loans.

- Applications for funding are accepted year-round with award typically within 3 to 6 months of application submittal.
- Interest rates vary – Currently RD's rates are at an all-time low at 1.5%, for the intermediate rate; and, lower rates (currently 1.125%) can apply if "poverty level" can be shown and there is a "health and safety threat" due to the need for the project.
- 30 to 40-year loan terms. To obtain grant funding, applicant must accept 40-year term. No prepayment penalty for early repayment.
- Application requirements:
  - Approved environmental assessment
  - Preliminary engineering report
  - Financial feasibility and cost analysis

RD requires that the utility user rates provide for an annual 10% reserve income in addition to annual debt service. Each loan agreement is individual to the applicant. RD funds may be used for all phases of project costs (i.e. planning, design, construction, some operation) including costs incurred prior to application to RD (including costs for the current facility planning effort). The governing stipulation is that RD funds for reimbursement of early phase costs do not become available for reimbursement until project construction is initiated via a construction contract award.

### *WA Department of Commerce*

The WA Department of Commerce administers the CDBG program. These Federal Department of Housing and Urban Development (HUD) funds are available for water and sewer projects for areas with at least 51% low to moderate income (LMI) residents, which have public health and safety or economic development issues.

The maximum grant amount is \$900,000. Applications are typically due early June (1<sup>st</sup> week) each year. Recipients are usually announced in September and funding contracts executed within three to six months following that.

The CDBG program is highly competitive and funds projects which primarily serve at least 51% LMI residents. Cities can conduct independent income surveys in an effort to demonstrate at least 51% LMI.

Appendix A

Update of 2003 Comprehensive Sewer Plan 10-yr Improvement Program  
Costs



**CSP-7**

**Manhole Replacement on Clark Between 1st & 2nd Ave.**

<b>Item</b>	<b>Description</b>	<b>Qty</b>	<b>Unit</b>	<b>Cost</b>	<b>Total Cost</b>	
1	PVC Sewer Mains (6-in)	10	LF	\$80	\$800	
2	Manhole	1	LS	\$8,000	\$8,000	
3	HMA Removal/Placement	20	SY	\$65	\$1,300	
4	Rock Excavation	20	LF	\$150	\$3,000	
					<u>Total</u>	<u>\$13,100</u>
					Washington State Tax: 8.0%	\$1,048
					Contingency @ 20%	\$2,600
					<u>Construction Subtotal</u>	<u>\$16,700</u>
					Engineering & Insp. fee @ 20%	\$3,300
					<u>Total Project</u>	<u>\$20,000</u>

**CSP-8**

**Sewer Main Replacement between Columbia & Division on Elm St.**

<b>Item</b>	<b>Description</b>	<b>Qty</b>	<b>Unit</b>	<b>Cost</b>	<b>Total Cost</b>	
1	PVC Sewer Mains (12-in)	325	LF	\$160	\$52,000	
2	Manhole	3	EA	\$8,000	\$24,000	
3	Service Tee	5	EA	\$1,300	\$6,500	
4	HMA Removal/Placement	325	SY	\$65	\$21,125	
5	Pipe Bedding Placement	325	LF	\$15	\$4,875	
6	Rock Excavation	325	LF	\$150	\$48,750	
					<u>Total</u>	<u>\$157,300</u>
					Washington State Tax: 8.0%	\$12,584
					Contingency @ 20%	\$31,500
					<u>Construction Subtotal</u>	<u>\$201,400</u>
					Engineering & Insp. fee @ 20%	\$40,300
					<u>Total Project</u>	<u>\$242,000</u>

CSP-11

Sewer Main Replacement (P-209) starting 1st Ave. & Extending NW - Columbia between 1st and Market

Item	Description	Qty	Unit	Cost	Total Cost
1	PVC Sewer Mains (10-in)	120	LF	\$145	\$17,400
2	Manhole	2	EA	\$8,000	\$16,000
3	Service Tee	1	EA	\$1,300	\$1,300
4	HMA Removal/Placement	120	SY	\$65	\$7,800
5	Pipe Bedding Placement	120	LF	\$15	\$1,800
6	Rock Excavation	120	LF	\$150	\$18,000
Total					\$62,300
Washington State Tax: 8.0%					\$4,984
Contingency @ 20%					\$12,500
Construction Subtotal					\$79,800
Engineering & Insp. fee @ 20%					\$16,000
Total Project					\$96,000

CSP-12

Manhole Installation on Columbia between Main & Railroad Ave.

Item	Description	Qty	Unit	Cost	Total Cost
1	PVC Sewer Mains (10-in)	80	LF	\$145	\$11,600
2	PVC Sewer Mains (8-in)	20	LF	\$90	\$1,800
3	Manhole	3	EA	\$8,000	\$24,000
4	HMA Removal/Placement	100	SY	\$65	\$6,500
5	Pipe Bedding Placement	100	LF	\$15	\$1,500
5	Rock Excavation	100	LF	\$150	\$15,000
Total					\$60,400
Washington State Tax: 8.0%					\$4,832
Contingency @ 20%					\$12,100
Construction Subtotal					\$77,300
Engineering & Insp. fee @ 20%					\$15,500
Total Project					\$93,000

CSP-15

Manhole Installation @ the intersection of Cascade & Main

Item	Description	Qty	Unit	Cost	Total Cost
1	PVC Sewer Mains (6-in)	40	LF	\$80	\$3,200
2	Manhole	1	EA	\$8,000	\$8,000
3	HMA Removal/Placement	40	SY	\$65	\$2,600
4	Rock Excavation	40	LF	\$150	\$6,000
Total					\$19,800
Washington State Tax: 8.0%					\$1,584
Contingency @ 20%					\$4,000
Construction Subtotal					\$25,400
Engineering & Insp. fee @ 20%					\$5,100
Total Project					\$31,000

CSP-16

Manhole Replacement on Chelan @ Alley between Alder & Broadway

Item	Description	Qty	Unit	Cost	Total Cost
1	PVC Sewer Mains (8-in)	40	LF	\$90	\$3,600
2	Manhole	1	EA	\$8,000	\$8,000
3	HMA Removal/Placement	40	SY	\$65	\$2,600
4	Rock Excavation	40	LF	\$150	\$6,000
Total					\$20,200
Washington State Tax: 8.0%					\$1,616
Contingency @ 20%					\$4,000
Construction Subtotal					\$25,800
Engineering & Insp. fee @ 20%					\$5,200
Total Project					\$31,000

Additional Sewer Main Replacements (S)							
Priority	Description	Existing	Length	Existing	Length	MH	Notes
AS-1	Replace Main	4-in	250				Needs replaced. Not enough drop at the cleanout which is were the end house connects causing constant issues. On bi-weekly wash list
AS-2	Replace Main		75				Some of this line has been replaced over the last couple years. 75 feet still needs replacement. On wash list.
AS-3	Replace Main	4-in	200				Needs replaced. Needs constant flushing. On wash list.
AS-4	Snaky Sewer - Priority #3						
AS-5	Replace Main						
AS-6	Replace Main	4-in	250	6-in			On wash list.
AS-7	Replace Main	4-in	300	6in	600	1	On wash list. No manhole in the middle of a 2 block stretch
AS-8	Replace Main						
AS-9	Snaky Sewer - Priority #5						
AS-10	Replace Main			6-in	900	3	Main is shallow, slow flowing. On wash list. Includes MH identified in 2003 CSP at Clark St.
AS-11	Replace Main	4-in	250			1	Needs replaced.
AS-12	Replace Main	4-in	250				Needs replaced. Adjacent to Priority #1 - Snaky Sewers project.

Additional Manhole Replacements (M)							
Priority	Description	Existing	Length	Existing	Length	MH	Notes
AM-1	Replace MH					1	Line could be split to divide flow into two main lines
AM-2	Replace MH					1	Bottom is gone. Diverter needs repaired. Identified in 2003 CSP.
AM-3	Replace MH					1	MH is brick and mortar. Needs replaced
AM-4	Replace MH					1	MH is brick and mortar. Bottom is gone. Needs replaced.
AM-5	Replace MH					1	MH is brick. Needs replaced.
AM-6	Replace MH					1	MH is brick. Needs replaced.
AM-7	Replace MH					1	MH is brick. Bottom is falling apart Needs replaced.
AM-8	Replace MH					1	MH is start of Palouse line. Bottom is lower than exit pipe level resulting in standing water.
AM-9	Replace MH					1	MH is falling apart. Needs replaced.
AM-10	Replace MH					1	MH is brick and falling apart. Identified in 2003 CSP.
SM-11	Replace MH					1	Pipe runs through MH. Ineffective as MH
AM-12	Replace MH					1	MH is brick and has a broken bottom. Needs replaced. Identified in 2003 CSP
AM-13	Replace MH					1	MH is brick and has rough bottom. Needs replaced.
AM-14	Install MH					1	Location needs a MH. Only has single cleanout.
AM-15	Replace MH					1	MH is brick. Needs replaced. Identified in 2003 CSP.
AM-16	Replace MH					1	MH is brick. Needs replaced.
AM-17	Replace MH					1	MH is brick. Needs replaced.

# SEWER LINES

- ① OSCAR OLSEN, BETWEEN COLUMBIA + DIVISION AND 5<sup>TH</sup> + 6<sup>TH</sup>
- ② LITTLE LEAGUE PARK, BETWEEN COLUMBIA + DIVISION AND CHERRY AND BIRCH
- ③ HARLAND EASTMAN - GARY HEINEMANN BETWEEN CHELAN AND CASCADE AND 2ND AND 3RD
- ④ STAN STREETER BETWEEN DIVISION AND COLUMBIA AND BIRCH AND ALDER (COULD BE SNAKEY LINE, HAS 3 HOMES USING PRIVATE LINE)
- ⑤ ADAM MILLER, FROM OLIVE TO PALOUSE BETWEEN BIRCH AND ALDER
- ⑥ MESSERSCHIDT BETWEEN PALOUSE AND COLUMBIA AND 6<sup>TH</sup> AND 7<sup>TH</sup>
- ⑦ RAY BREWER FROM JACKSON TO WASHINGTON AND BETWEEN 5<sup>TH</sup> AND 4<sup>TH</sup>
- ⑧ RON GREENWALT ON JACKSON BETWEEN 2ND AND 3RD
- ⑨ BATTERSON ON 3RD BETWEEN ADAMS AND JEFFERSON. (COULD BE SNAKEY LINE GOES TOWARD ADAMS WASHINGTON AND TURNS COMES BACK TO JEFFERSON.)
- ⑩ MITCH FODE FROM EVERGREEN <sup>GRANT</sup> EQUIPMENT TO JACKSON BETWEEN 1<sup>ST</sup> AND 2ND
- ⑪ RICH GRAMS FROM ~~BE~~ EAST SIDE OF DIVISION TO WASH BETWEEN 3RD AND 4<sup>TH</sup>
- ⑫ SCHWISOW APT BETWEEN CHELAN AND PALOUSE AND 7<sup>TH</sup> AND 8<sup>TH</sup>

✶

# SNAKEY SEWER LINES

- 1) Bud Kirkendall, between Chelan and Palouse and 8<sup>th</sup> and 9<sup>th</sup>.

NO CITY ACCESS, REFER TO MAP

---

---

---

---

---

---

---

---

- 2) Dustin Art, between Jackson and Lewis and 6<sup>th</sup> and 7<sup>th</sup>

NO CITY ACCESS, REFER TO MAP

---

---

---

---

---

---

---

---

- 3) Ron Newton between Jackson and Lewis and 2<sup>nd</sup> and 3<sup>rd</sup>

NO CITY ACCESS, REFER TO MAP

---

---

---

---

---

---

---

---

## SEWER LINES

6) Messerschmidt, between Palouse and Columbia and 6<sup>th</sup> and 7<sup>th</sup>

ANOTHER LINE ON THE WASH LIST.

---

---

---

7) Ray Brewer, from Jackson to Washington and between 6<sup>th</sup> and 7<sup>th</sup>

A LINE ON OUR WASH LIST WITH NO MANHOLES IN THE MIDDLE  
OF A 2 BLOCK STRETCH

---

---

---

8) Ron Greenwalt on Jackson between Washington and between 6<sup>th</sup> and 7<sup>th</sup>

---

---

---

9) Patterson on 3<sup>rd</sup> between Adams and Jefferson (could be snaky line goes toward Adams and turns  
comes back to Jefferson)

---

---

---

10) Mitch Fode, from Evergreen Grant Equipment to Jackson between 1<sup>st</sup> and 2<sup>nd</sup>

SHALLOW, SLOW FLOWING LINE, ON OUR WASH LIST

---

---

---

# MANHOLES

- 1) Washington between 1<sup>st</sup> and 2<sup>nd</sup>

LINE COULD BE SPLIT TO DIVIDE FLOW INTO 2  
MAIN LINES.

- 2) Columbia between Railroad and Main

BOTTOM IS GRAVE, DUCTILE NEEDS REPAIRS

- 3) Washington between 3<sup>rd</sup> and 4<sup>th</sup>

BRICK, NO MORTAR

- 4) Washington between 6<sup>th</sup> and 7<sup>th</sup>

BRICK, BAD MORTAR, BOTTOM BRICKS / GRAVE

- 5) Washington between 5<sup>th</sup> and 6<sup>th</sup>

BRICK

- 6) Washington between 4<sup>th</sup> and 5<sup>th</sup>

BRICK NO MORTAR



## MANHOLES

13) Jefferson between 4<sup>th</sup> and 5<sup>th</sup> (part of Ray Brewer Line 7)

NEEDS MANHOLE, ONLY HAS SINGLE CLEANOUT

14) Dan Galbreath (clean out needed)

CLEANOUT FOUND IN DAN'S BACK YARD, ALSO UNDER  
BOBESS'S FENCE LINE

15) Gary Kubla (clean out needed)

16) Columbia between Alder and Broadway

BRICK

17) Columbia between Cherry and Dogwood

BRICK BUT IN FAIR SHAPE

18) Broadway and Washington

BRICK FOUND APART

# Well 8 Replacement Project

The City of Ritzville has obtained funding from the United States Department of Agriculture Rural Development (USDA RD) program to upgrade and replace portions of its aging water system. One of the projects the City will be embarking on is the Well 8 Replacement Project. Scheduled to begin later this month, this project will replace one of the City's wells (Well 8) located near the intersection of Peach St. and Low St. Built in the early 1970's, Well 8 was once the City's main source of drinking water. Over the years, loss of water level in the surrounding aquifer and various other issues have rendered the well inoperable which have necessitated the replacement so that the City can continue to serve the community with safe, reliable drinking water.

Drilling will take place beginning in March of this year and will continue into late summer. During this time, you can expect well drilling operations Monday thru Friday from approximately 7:00AM to 6:00PM. We apologize in advance for any inconvenience construction may cause but we are excited about this project and believe it will benefit our community greatly. If you have any questions, please contact city hall at (509) 659-1930.

