

• Evergreen shrubs to help soften the look of the building
• Creates an inviting area to sit.

• Flowering trees
• Mid to small in size

Existing Fence

• Tall & narrow evergreen trees to disguise wires

• Eco Blocks to build up soil and create level area for lawn.

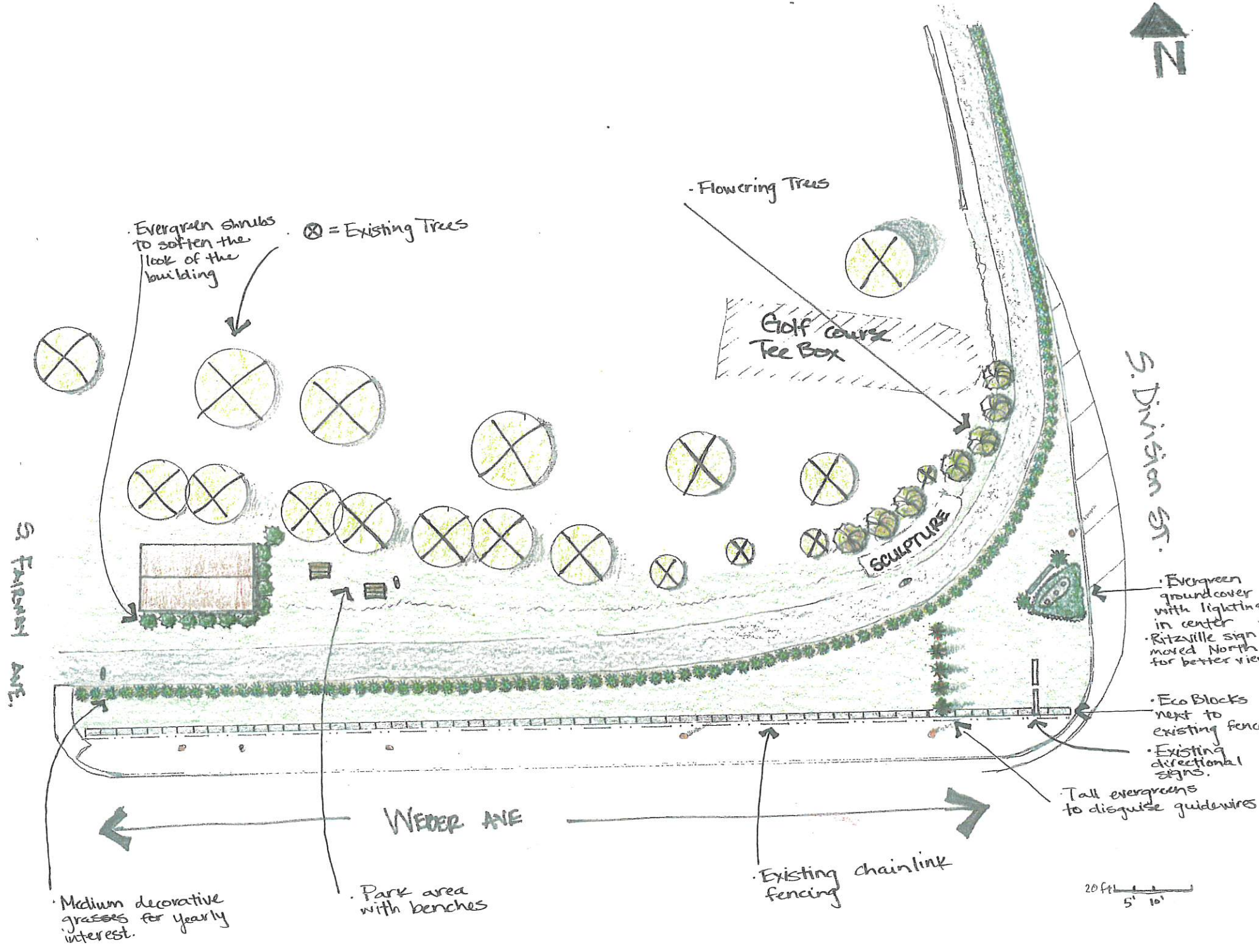
• Lawn

• Large decorative grasses to frame sign.

• New lighting
• Move sign to create more space from directional signs

• Evergreen ground cover to disguise lights & yearly interest

• Medium decorative grasses for yearly interest



Evergreen shrubs to soften the look of the building

⊗ = Existing Trees

Flowering Trees

Golf course Tee Box

SCULPTURE

S. Division St.

S. Fairport Ave.

WEDDER AVE

Evergreen ground cover with lighting in center
Ritzville sign moved North for better view

Eco Blocks next to existing fence
Existing directional signs.

Tall evergreens to disguise guidewires

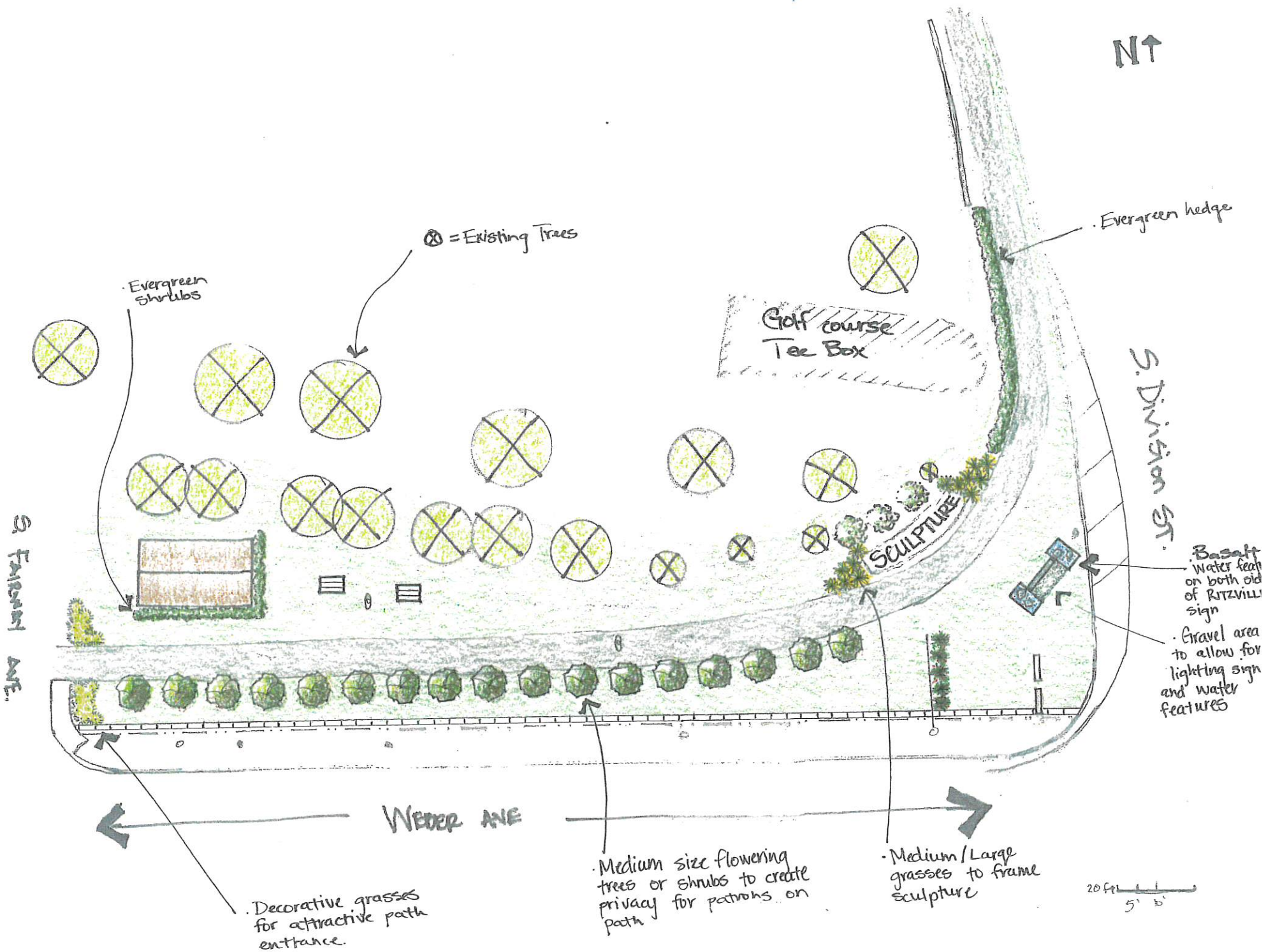
Medium decorative grasses for yearly interest.

Park area with benches

Existing chainlink fencing

20 ft
5' 10'

NT ↑



⊗ = Existing Trees

Evergreen shrubs

Evergreen hedge

Golf course Tee Box

SCULPTURE

S. Division ST.

S. Fairport AVE.

Weber AVE

Basalt water feat on both old of Ritzvill sign

Gravel area to allow for lighting sign and water features

Decorative grasses for attractive path entrance.

Medium size flowering trees or shrubs to create privacy for patrons on path

Medium/Large grasses to frame sculpture

20 ft
5' 5'